



New Intstream E² Energy Market Analysis Platform

Product Overview

intStream

For those who make split second

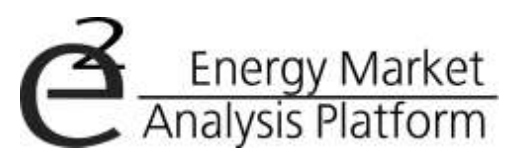


New IntStream E² Energy

decisions every day



Market Analysis Platform



ON TODAY'S EXTREMELY VOLATILE ENERGY MARKETS, ABILITY TO ACT FAST IS THE TOPMOST PRIORITY

CONTENTS

COMPLETE MARKET UNDERSTANDING	6
TOOL FOR THIS ONE PURPOSE	7
REQUIREMENTS FOR FAST AND ACCURATE MARKET DECISION MAKING	
SPEED AND CONVENIENCE	8
AS EASY AS IT LOOKS	10
SUPER FAST EDITING COMES AS STANDARD	12
MARKET MONITORING	14
SIMPLIFY MARKET ANALYSIS	16
READ YOUR NEWS LIKE YOU WOULD YOUR E-MAILS	18
TEAM TOOLS	19
DATA MANAGEMENT	20
DATA HANDLING	22
SCREEN DESIGN PHILOSOPHIES	24
DATAFEEDS	25
CHOSEN FUNCTIONALITY	26
VERSIONS	28

OUR RESEARCH INDICATES THAT THE MOST FREQUENTLY EXPERIENCED PROBLEMS AMONG ENERGY MARKET SPECIALISTS ARE:

1. HOW TO SPEED UP DECISION MAKING WITHOUT COMPROMISING QUALITY.
2. HOW TO QUICKLY FIND THE ARGUMENTS TO BACK UP EACH MARKET DECISION MADE.

ABILITY TO MAKE GOOD MARKET DECISIONS FAST WILL MAKE THE DIFFERENCE ON YOUR BOTTOM LINE WORTH MILLIONS OF EUROS.



FOR THOSE WHO MAKE SPLIT SECOND DECISIONS EVERY DAY...



...HOLISTIC AND COMPLETE MARKET PICTURE IS A MUST

FAST AND ACCURATE MARKET DECISION MAKING IS ONLY AVAILABLE, WHEN HOLISTIC AND COMPLETE VIEW OF THE SITUATION CAN BE OBTAINED WITHIN *SHORT TIME SPAN*. THIS REQUIRES:

1. DEVELOPMENT OF THE SITUATION TO THIS POINT CAN BE CLEARLY UNDERSTOOD.
2. REACTION TO CHANGES IN THE CURRENT SITUATION IS NEXT TO INSTANT.
3. AVAILABILITY OF TOOLS THAT AID IN ASSESSING THE MOST LIKELY FUTURE PATH.

WHY SHOULD YOUR COMPANY BOTHER?

IF YOUR COMPANY IS INVOLVED IN ACTIVE ENERGY RISK HEDGING, OR PROVIDES TRADING SERVICES TO ITS CLIENTS, THE NEED TO MAKE QUICK DECISIONS IS CONSTANTLY INCREASING, DUE TO:

1. THE MARKET PACE IS ACCELERATING FAST .
2. GOOD CUSTOMER SERVICE LEVEL REQUIRES INSTANT ANSWERS TO QUESTIONS AND ADVICE TO DECISION MAKERS.
3. MAKING EVERYDAY MARKET REPORTS TAKES AWAY THE TIME FROM PARTICIPATING IN THE MARKET ACTION.

Complete market understanding =

**Clear view on
development
that has lead to
current situation +**

**Complete
understanding of
the current
situation +**

**View on likely
future paths**



WE HAVE DESIGNED A TOOL FOR THIS ONE PURPOSE –

E²

HOW DOES E² ANSWER TO REQUIREMENT OF GAINING COMPLETE MARKET UNDERSTANDING FAST?

REQUIREMENT: ENABLES INSTANT UNDERSTANDING OF DEVELOPMENT THAT HAS LEAD TO CURRENT SITUATION

- **ANSWER:** ABILITY TO VIEW GRAPHICALLY BOTH THE HISTORICAL AND REAL TIME DEVELOPMENT OF MOST MARKET DRIVERS SIMULTANEOUSLY

REQUIREMENT: ENABLES COMPLETE UNDERSTANDING OF THE CURRENT SITUATION

- **ANSWER:** POWERFUL MONITORING TOOLS SUCH AS REAL TIME FORWARD CURVES

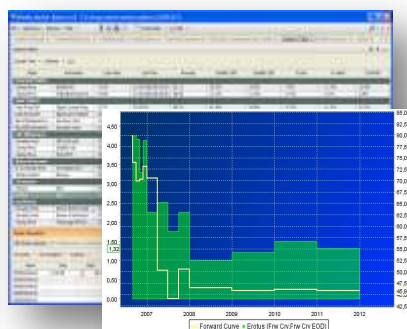
REQUIREMENT: VIEW ON LIKELY FUTURE PATHS

- **ANSWER:** HAS MORE THAN 90 CALCULATION RULES THAT CAN BE COMBINED ANY WAY WANTED.
- **ANSWER:** GENERATES AUTOMATED FORECASTS BASED ON RULE ENGINE
- **ANSWER:** WITH POWERFUL DATA MANAGEMENT, SUCH AS ABILITY TO COMBINE AUTOMATICALLY CLEANED OTC AND EXCHANGE DATA FOR INTRADAY PURPOSES

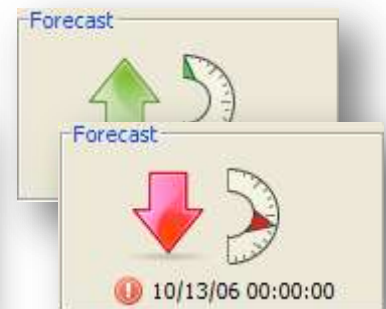
■ EXTENSIVE GRAPHICAL VIEWS ON PREVIOUS MARKET DEVELOPMENT



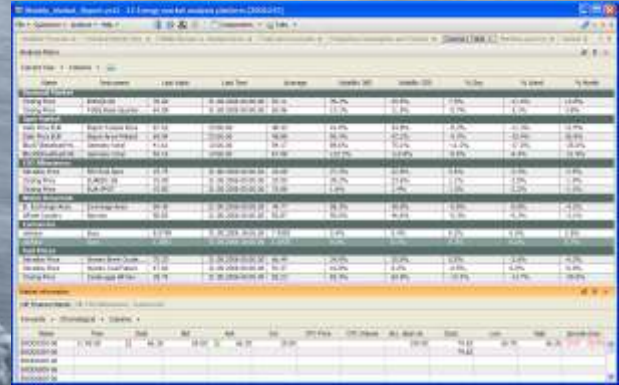
■ POWERFUL MONITORING TOOLS ON THE CURRENT MARKET SITUATION



■ AUTOMATED FORECASTS AID TO ASSESS LIKELY FUTURE DEVELOPMENTS



SPEED.



Name	Price	% Change	% Vol
Apple Inc	145.00	+0.8%	1.2%
Microsoft	31.50	+0.5%	0.8%
Amazon.com	175.00	+1.2%	1.5%
Google	28.00	+0.3%	0.6%
Facebook	110.00	+0.7%	0.9%
Twitter	35.00	+1.5%	2.0%
LinkedIn	25.00	+0.4%	0.5%
Slack	18.00	+0.6%	0.7%
Dropbox	12.00	+0.2%	0.3%
Zoom	8.00	+0.9%	1.1%
Zoom Video	15.00	+1.1%	1.3%
Zoom Meeting	22.00	+1.3%	1.5%
Zoom Phone	30.00	+1.4%	1.6%
Zoom Rooms	40.00	+1.5%	1.7%
Zoom Support	50.00	+1.6%	1.8%
Zoom Training	60.00	+1.7%	1.9%
Zoom Webinars	70.00	+1.8%	2.0%
Zoom Meetings	80.00	+1.9%	2.1%
Zoom Meetings	90.00	+2.0%	2.2%
Zoom Meetings	100.00	+2.1%	2.3%
Zoom Meetings	110.00	+2.2%	2.4%
Zoom Meetings	120.00	+2.3%	2.5%
Zoom Meetings	130.00	+2.4%	2.6%
Zoom Meetings	140.00	+2.5%	2.7%
Zoom Meetings	150.00	+2.6%	2.8%
Zoom Meetings	160.00	+2.7%	2.9%
Zoom Meetings	170.00	+2.8%	3.0%
Zoom Meetings	180.00	+2.9%	3.1%
Zoom Meetings	190.00	+3.0%	3.2%
Zoom Meetings	200.00	+3.1%	3.3%
Zoom Meetings	210.00	+3.2%	3.4%
Zoom Meetings	220.00	+3.3%	3.5%
Zoom Meetings	230.00	+3.4%	3.6%
Zoom Meetings	240.00	+3.5%	3.7%
Zoom Meetings	250.00	+3.6%	3.8%
Zoom Meetings	260.00	+3.7%	3.9%
Zoom Meetings	270.00	+3.8%	4.0%
Zoom Meetings	280.00	+3.9%	4.1%
Zoom Meetings	290.00	+4.0%	4.2%
Zoom Meetings	300.00	+4.1%	4.3%

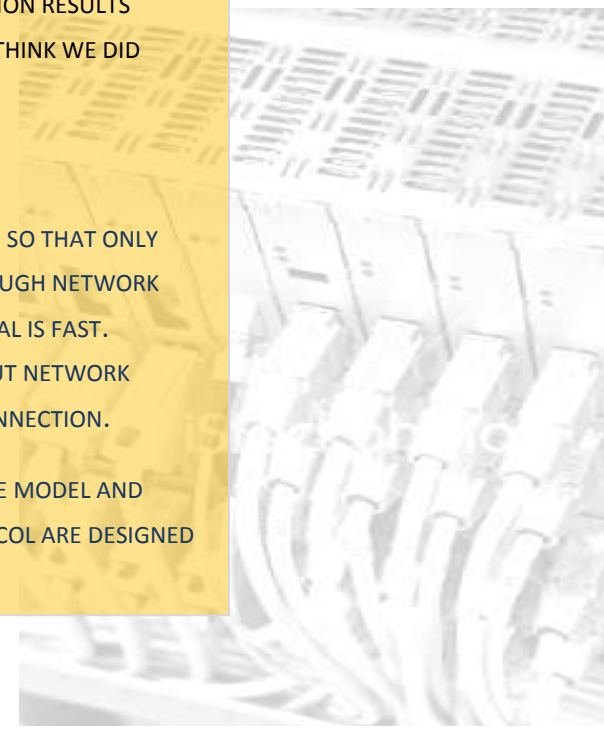
E² IS DESIGNED FOR SPEED

WHEN DESIGNING E2, WE CHOSE *SPEED* AS OUR MAIN DESIGN GOAL, BOTH IN TERMS OF *RESPONSE TIME* AND IN *EASE OF USE*. THIS IS BECAUSE WE KNEW THAT OUR CLIENTELE WANTS TO SEE DOZENS OF CHARTS AT ONE TIME, MANAGE YEARS OF HOURLY SPOT PRICE DATA AND STILL EVERYTHING HAS TO UPDATE AUTOMATICALLY AND CALCULATION RESULTS BECOMING VISIBLE WITHIN A SECOND. WE THINK WE DID GOOD JOB.

DATA DESIGN

E2 STORES TIME SERIES DATA LOCALLY, SO THAT ONLY UPDATES TO DATA ARE RECEIVED THROUGH NETWORK CONNECTION AND THUS DATA RETRIEVAL IS FAST. SOFTWARE CAN ALSO BE USED WITHOUT NETWORK CONNECTION OR WITH 3G MOBILE CONNECTION.

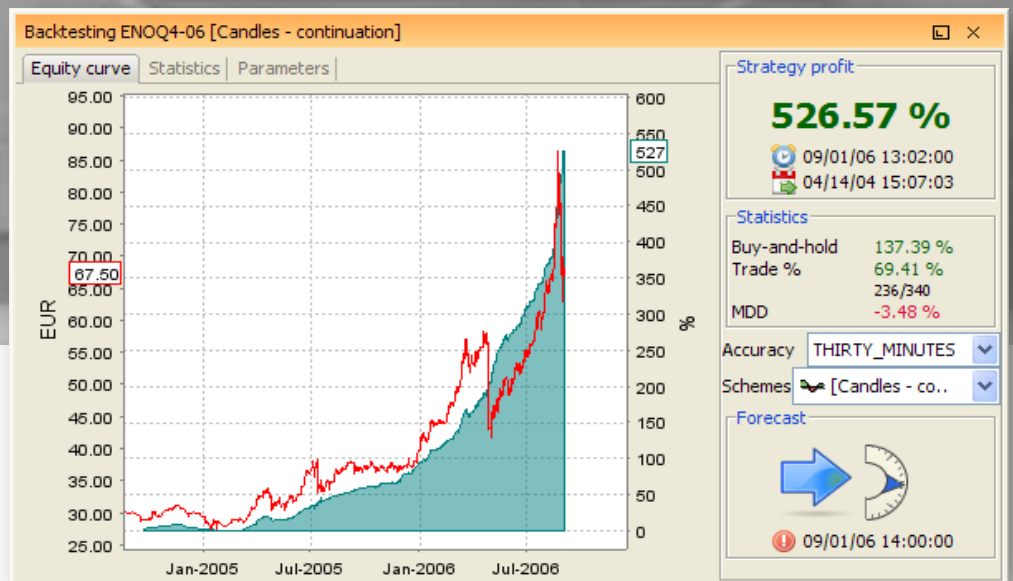
PROPRIETARY INTERNAL DATA STORAGE MODEL AND COMPRESSING NETWORK DATA PROTOCOL ARE DESIGNED TO MINIMIZE WAITING TIME.



and CONVENIENCE.

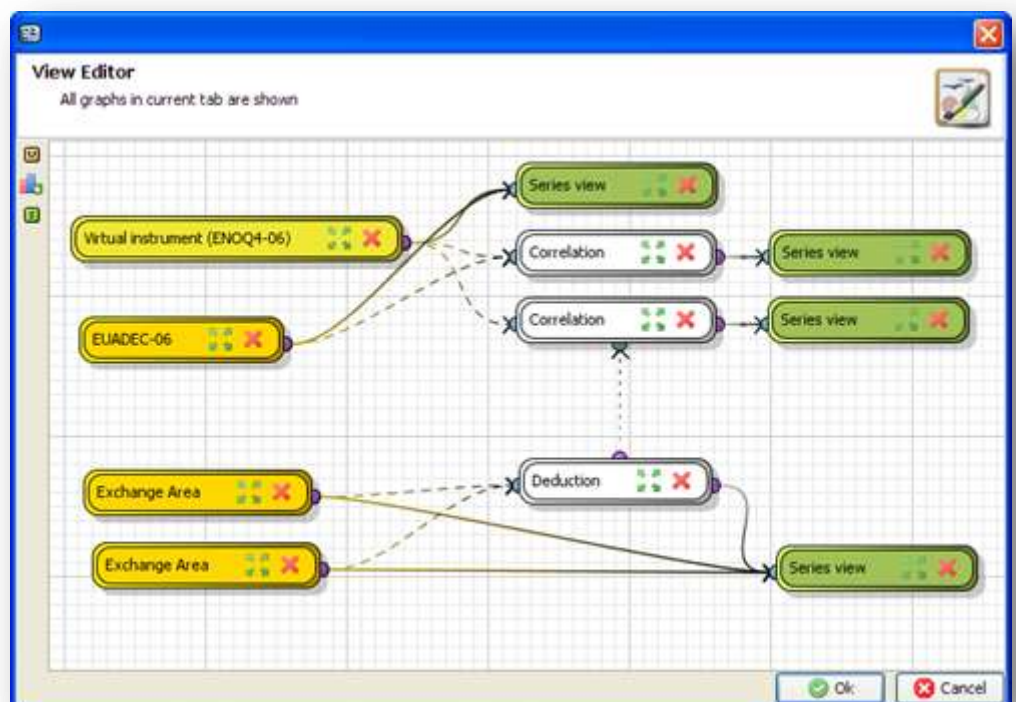
FORECAST FOR YOUR CHOSEN TIME PERIOD

WITH BACKTESTING TOOLS, ACCURATE FORECASTS FOR CHOSEN TIME SPAN, STARTING FROM NEXT 10 MINUTES ARE ALWAYS AT YOUR DISPOSAL.



GRAPHICAL VIEW EDITOR

E2 ENABLES STACKING, OR CHAINING OF ANALYSIS CALCULATIONS. GRAPHICAL VIEW EDITOR MAKES MANAGING LARGE ANALYSIS A BLISS.



E2 is as easy to use as it looks. Still hundreds of analysis await for your orders under its hood.

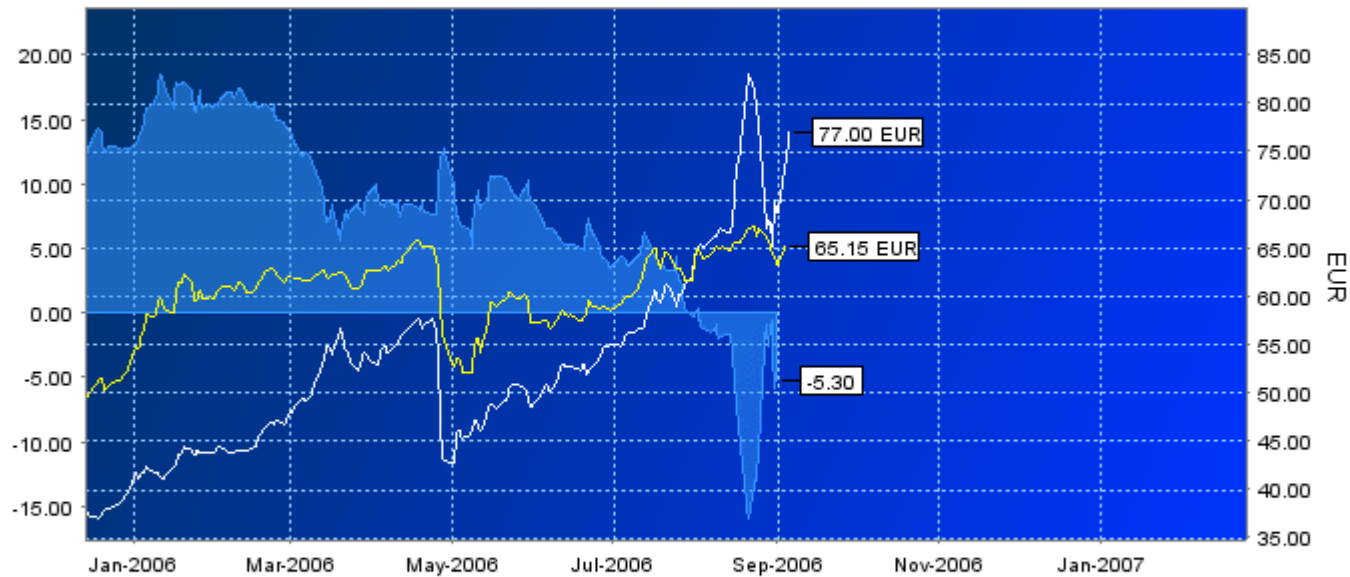
Weekly_Market_Report.ert2 - E2 Energy market analysis platform [2006248]

File ▾ Quicksave ▾ Analyse ▾ Help ▾

Components ▾ Tabs ▾

Weather Forecast × Technical Market View × Middle-Europe vs. Nordpool Area × Fuels and Currencies × Production, Consumption

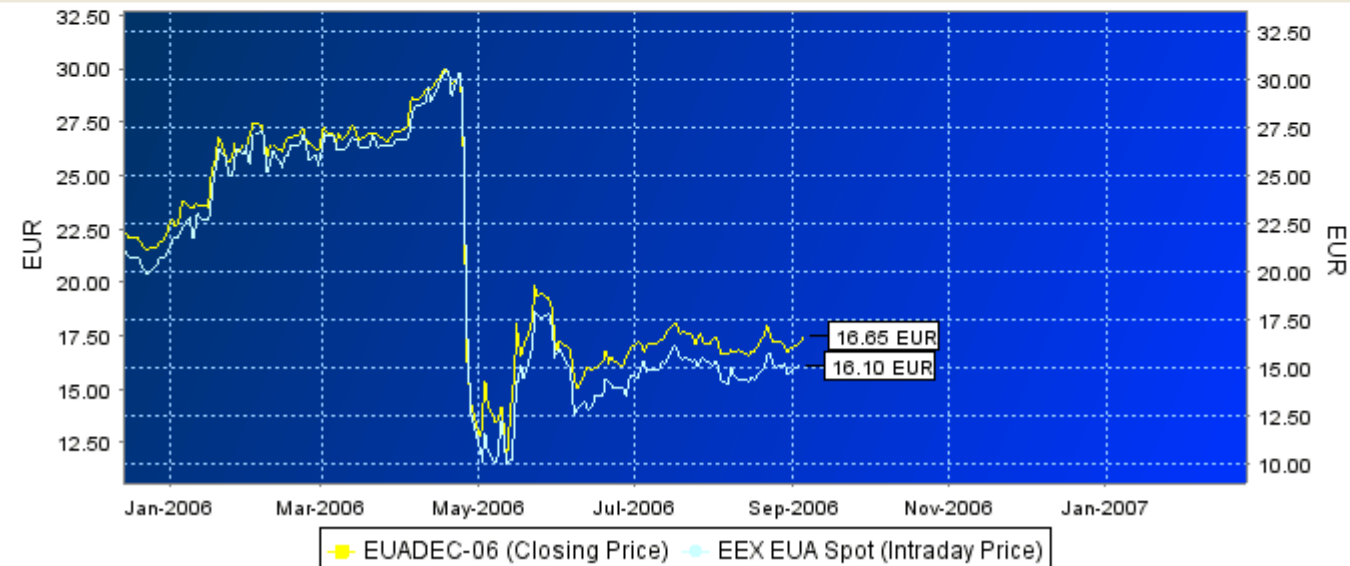
Forward Market Spread EEX - Nordpool



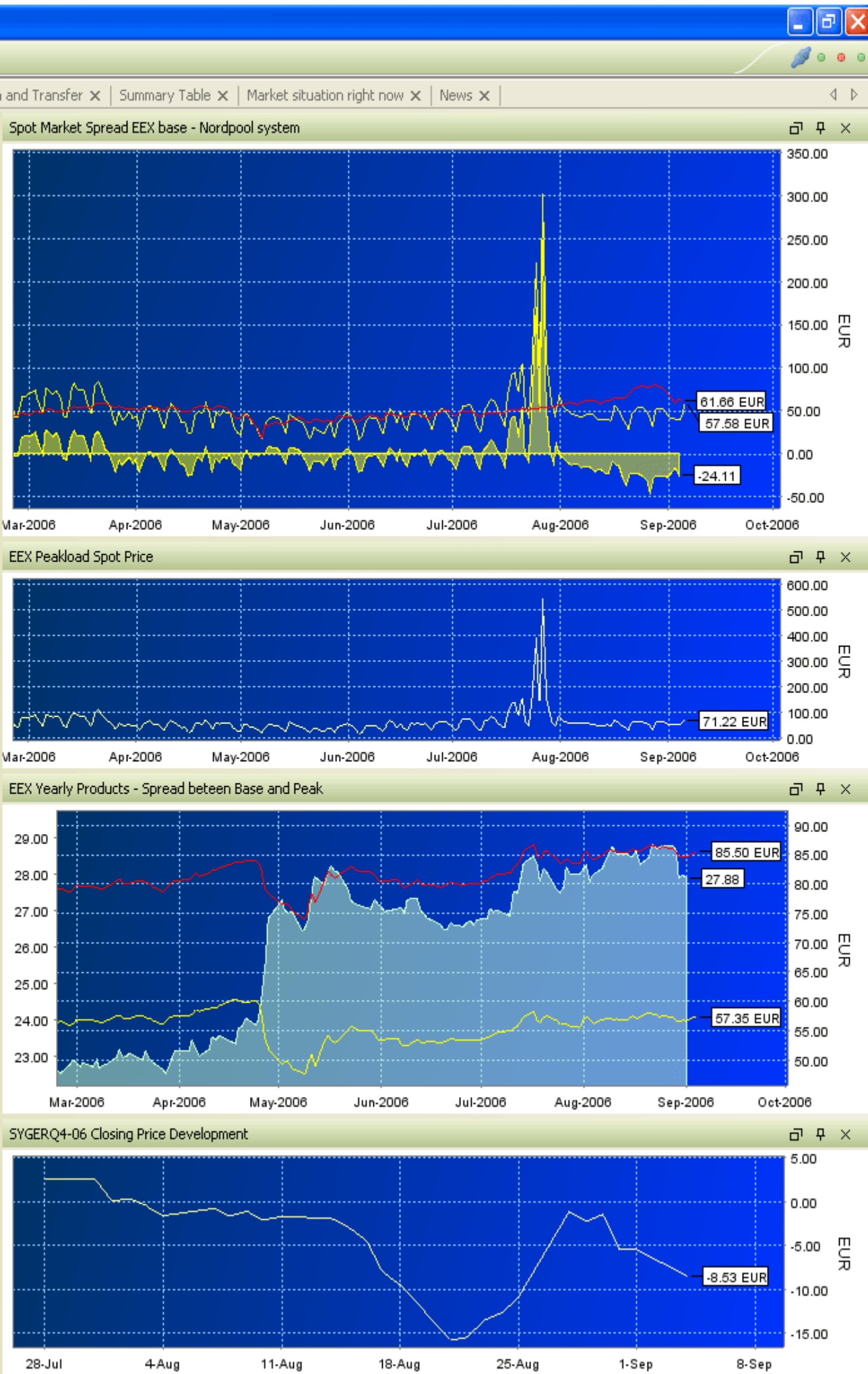
Forward Market Spread Nordpool - EEX Peak



Price Development CO2 Allowances - EEX Spot and NP Forward



■ EUADEC-06 (Closing Price) ■ EEX EUA Spot (Intraday Price)



SUPER FAST EDITING COMES AS STANDARD

INSTANTLY
OPERATING FREE WORD
SEARCH FOR ADDING
DATA FROM TIME SERIES
DATABASE

COMPARISON TO
ALREADY EXPIRED
PRODUCTS IS POSSIBLE
BY DISABLING ACTIVE
FILTERING

Weekly_Market_Report.ert2 - E2 Energy market analysis platform [2006248]

File ▾ Quicksave ▾ Analyse ▾ Help ▾

Components ▾ Tabs ▾

Monthly Search

Exchanges Fundamentals My Group Imported data Search

Nordpool feed Show only active

Name	Value	Time
NP Daily Futures [5]		
NP Monthly Forwards [6]		
NP Seasonal Forwards [9]		
NP Yearly Futures [5]		
NP Weekly Futures [6]		
Regulating Power [11]		
Transmission Exchange [38]		
NP Options [108]		
Nordpool Spot [29]		
Production and Consumption [8]		
NP Contracts for Difference [44]		

NP_paasto Show only active

Name	Value	Time
NP CO2 Allowances [8]		

EEEX_history Show only active

Name	Value	Time
EEEX Phelix Base Month Futures [7]		
EEEX Phelix Base Quarter Futures [7]		
EEEX Phelix Base Year Futures [7]		
EEEX Phelix Peak Month Futures [7]		
EEEX Phelix Peak Quarter Futures [7]		
EEEX Phelix Base Peak Year Futures [7]		
EEEX CO2 Allowances [1]		
EEEX Spot [6]		

spectron_power Show only active

Name	Value	Time
ETS EUA Green Yearly EU [8]		
Belgium Bslid-Power Months [12]		
Belgium Bslid-Power Quarters [8]		
Belgium Bslid-Power Years [4]		
France Bslid-Power Months [12]		
France Bslid-Power Quarters [5]		
France Bslid-Power Years [3]		
Germany Bslid-Power Months [12]		
Germany Bslid-Power Quarters [8]		
Germany Bslid-Power Years [4]		
Germany Peaks-Power Months [12]		
Germany Peaks-Power Quarters [8]		
Germany Peaks-Power Years [4]		
Holland Bslid-Power Months [12]		
Holland Bslid-Power Quarters [8]		
Holland Bslid-Power Years [3]		
Holland Peaks-Power Months [12]		
Holland Peaks-Power Quarters [8]		
Holland Peaks-Power Years [3]		

Market information

Nordpool Finance Market

Season Chronological Columns

Name	Time	Deal	Bid	Ask
ENOQ4-06	11:15:01	77.00	76.60	77.40
ENOQ1-07	10:51:34	79.50	78.50	79.50
ENOQ2-07	11:17:42	51.75	51.60	51.90
ENOQ3-07			45.00	45.00
ENOQ4-07	09:47:08	50.80	50.85	51.15
ENOQ1-08			53.85	53.85
ENOQ2-08			44.75	44.75

Trades table(ENOQ4-06)

Last Deal

77.00 +4.5%
11:15:01 6 MW 3.50€

Time	Volume	Price	Ratio
11:15:01	2/6	77.00	
11:04:58	2/4	77.00	
10:55:15	2/2	77.00	
10:54:31	2/2	77.45	
10:54:26	2/2	77.25	
10:52:24	1/28	77.50	
10:52:22	5/27	77.50	
10:52:18	5/22	77.50	
10:52:15	5/17	77.50	
10:52:10	5/12	77.50	
10:51:58	7/7	77.50	
10:51:40	1/1	77.40	
10:50:25	5/7	77.25	
10:49:43	2/2	77.25	
10:47:59	5/5	77.10	
10:47:05	2/2	76.90	
10:45:02	2/2	76.75	
10:42:41	1/1	76.70	
10:41:23	2/2	76.60	
10:41:03	2/2	76.50	
10:40:19	5/5	76.55	

Orderbook(ENOQ4-06)

Name: ENO...

Time	Level	Bid	Volume	EUR	Määrä	Myyn...
05/09 ... 3						
1	76.6	5.0	1.0	77.3		
2	76.5	5.0	2.0	77.45		
3	76.25	3.0	5.0	77.5		

Weekly Japan

Jan-2006 Mar-2006

ENOQ4-06
BOL (Close)

News

Nordp...

Today

Yester...

Last we...

Old new...

USE AND BUILD YOUR OWN MULTI-SCREEN
WORK SPACES SEPARATED BY TABS

Summary Table Market situation right now News

	Vol.	O...	O...	Acc...	Cl...	Low	High	Spread...	
45	2.00	77.00	11.00	249.00	73.50	76.05	78.00	3.50	4.5%
25	2.00	79.50	2.00	75.00	75.50	78.00	79.50	4.00	5.0%
75	1.00	51.60	1.00	15.00	51.25	51.75	52.35	0.50	1.0%
75					45.35				
00	1.00	51.00	1.00	1.00	50.80	50.80	50.80	0.00	0.0%
50					54.00				
00					45.20				

Weekly Japanese Candles

Summary Table

Title	Time	Description
.....	09:44:00	--
Tyssefaldene	09:30:00	--
ay (9		
ek (66		
s (199		

E2 status

Instrument hotswap

ENOQ4-06

ENOYR-07

ENOQ4-06

ENOYR-08

Chart (Weekly Japanese Candles)

Gradient To all

Grid color ----- v

Show legend Reduce topic

Show topic Show last values

Open theme Choose v Save theme

Series (BOLL Lower (Closing Price,20,2.0))

Line v Day v

v

Analysis (BOLL)

Series [v] ENOQ4-06 (Closing Price) v

Period 20

Delta multiplier 2.0

Info (BOLL)

Bollinger Bands

The **Bollinger Bands (BOL)** are plotted at standard deviation levels above and below a moving average. Since standard deviation is a measure of volatility, the bands are self-adjusting: widening during volatile markets and contracting during calmer periods. Bollinger Bands were developed by John Bollinger.

Example on usage

When the price is near the upper or lower band it indicates that a reversal may be imminent. The middle band becomes a support or resistance level.

MAKE EACH SCREEN
WORK AS A TEMPLATE
BY HOT SWAPPING ITS
CONTENT INSTANTLY

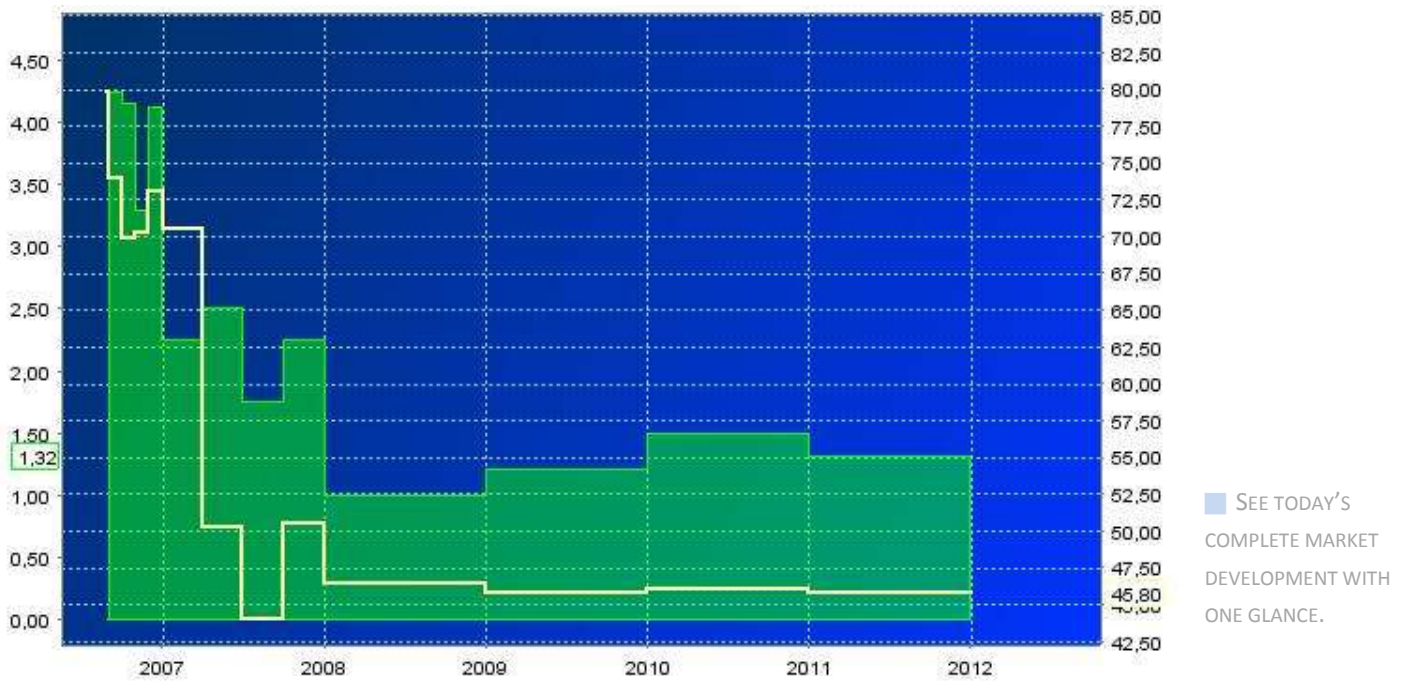
CUSTOMIZE HOW
YOUR CHARTS LOOK

CHANGE DATA
ACCURACY ON THE FLY

ALTER ANALYSIS
PARAMETERS

AUTOMATED HELP
SYSTEM PROVIDES
INFORMATION ON
EVERY ANALYSIS RULE
AND EXAMPLES ON
HOW TO USE THEM

MARKET MONITORING: COMPLETE UNDERSTANDING OF THE CURRENT SITUATION



IT IS NOT THE SAME HOW YOU DO YOUR WORK

MARKET MONITORING IS AT THE HEART OF ALL MARKET INFORMATION SYSTEMS AND A LOT OF TOOLS ARE AVAILABLE. STILL THE MOST EFFECTIVE WAY OF LOOKING AT THE MARKET ACTIVITY AMISS.

SEE THE MARKET ACTIVITY AS CHANGES IN FORWARD CURVE

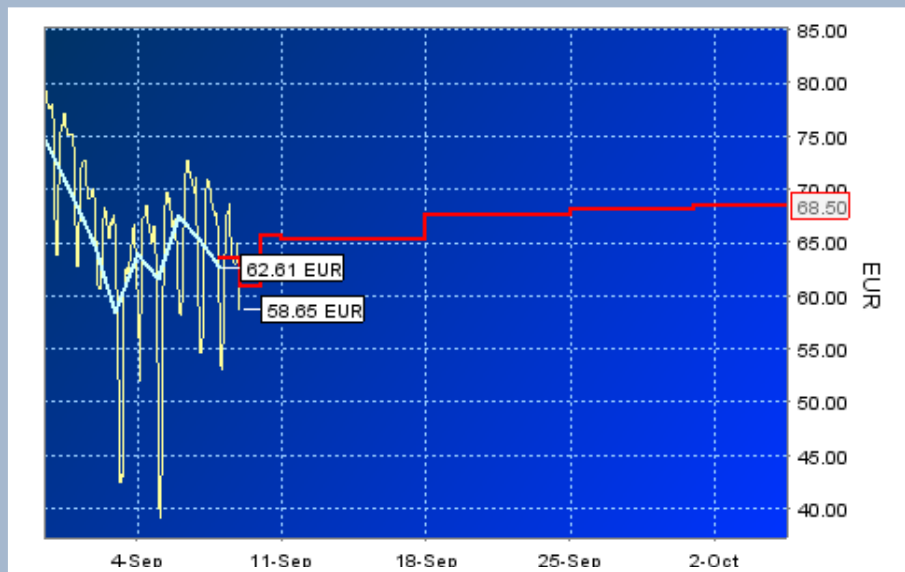
OUR CONTRIBUTION TO THIS PROBLEM, AMONG THE MORE TRADITIONAL TOOLS, IS COMPARING TODAY'S REAL TIME FORWARD CURVE VALUES AGAINST YESTERDAY'S CLOSING PRICE FORWARD CURVE (ABOVE) TO VISUALIZE THE WHOLE MARKET AT ONE GLANCE.

Requirements for fast and accurate market decision making

SEE HOW TWO NEIGHBORING MARKETS DIFFER THROUGH THE WHOLE LENGTH OF THEIR PRODUCT COVERAGE.



ZOOM IN WHERE THE SPOT MARKET AND FINANCE MARKET FORWARD CURVE INTERCEPTS FOR THE LATEST MARKET FORECAST.



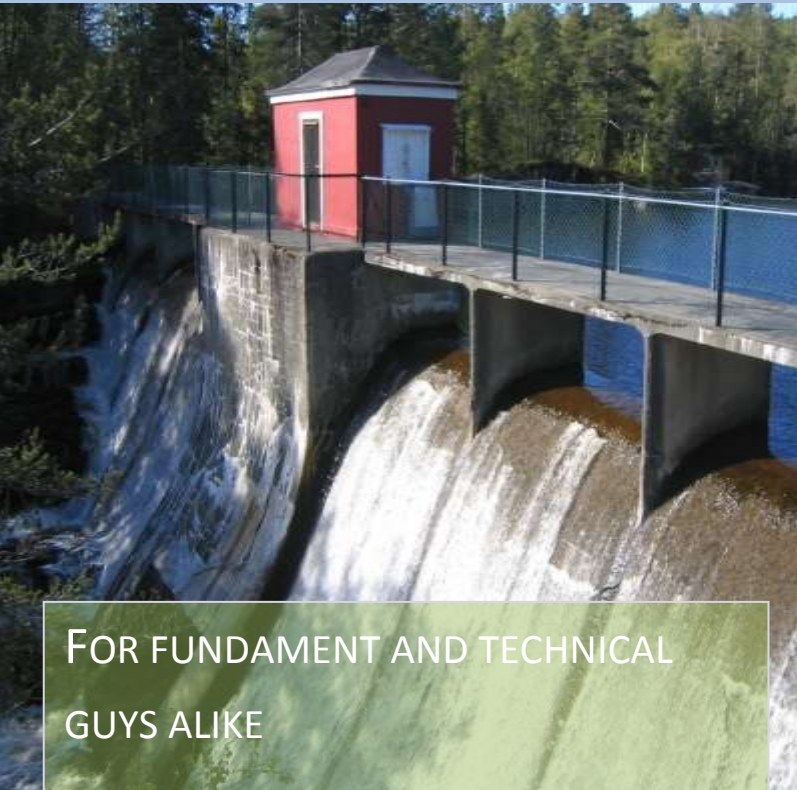
ZOOM OUT TO SHOW YOUR CUSTOMERS THE BIG PICTURE - AND THEY WILL APPRECIATE IT.



Requirements for fast and accurate market decision making

SIMPLIFY MARKET ANALYSIS:

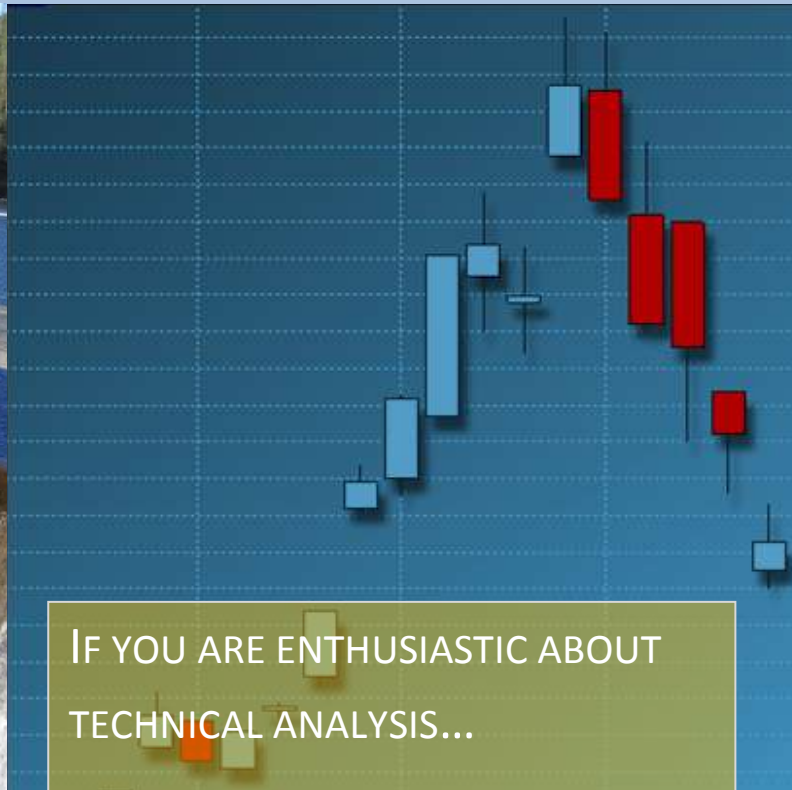
- 1.) IDENTIFY YOUR FAVORITE MARKET SIGNALS
- 2.) TRANSFORM THEM TO CUSTOM MARKET PREDICTORS



FOR FUNDAMENT AND TECHNICAL GUYS ALIKE

FAST, BUT WELL-PREPARED, GOOD DECISIONS, CAN SHOW A BENEFIT OF MILLIONS OF EUROS IN THE COMPANY'S RESULT. IN THE INCREASINGLY VOLATILE MARKET, WITH A LARGE QUANTITY OF DATA AVAILABLE, DECISIONS ARE DIFFICULT TO DO OBJECTIVELY AND BY HAVING A HOLISTIC VIEW OF THE CURRENT MARKET STATE.

ONE PART OF OBTAINING THAT VIEW IS TO VERIFY THE CREDIBILITY AND RELIABILITY OF THOSE INDICATORS THAT YOU HOLD CRUCIAL TO YOUR DECISION-MAKING. WHEN A RELIABLE STRATEGY IS FOUND, IT SHOULD BE TRANSFERRED TO AN EASY AND FAST-TO-READ MARKET PREDICTOR. BACKTESTING YOUR IDEA ON FUNDAMENT AND TECHNICAL INDICATORS IS POSSIBLE. CONVERTING THE RESULT TO A RELIABLE PREDICTOR, IS THE KEY TO FAST DECISION-MAKING.



IF YOU ARE ENTHUSIASTIC ABOUT TECHNICAL ANALYSIS...

E² MIGHT BE A PRODUCT FOR YOU, SINCE ITS DESIGNED BY ENTHUSIASTS AS WELL! WE HAVE TRIED TO PACK THE PRODUCT WITH A SET OF GENUINELY INTERESTING TECHNICAL ANALYSIS TOOLS. A CREAM OF THESE ARE LISTED BELOW:

- OVER 60 CANDLE PATTERN DETECTION RULES.
- OVER 50 INDICATORS AND 40 OTHER CALCULATION RULES INCLUDING MORE ADVANCED INDICATORS SUCH AS HILBERT TRANSFORM CALCULATIONS.
- EASY-TO-USE INTRADAY ANALYSIS AND BACKTESTING.
- INDICATORS WORK BETTER WITH E²'S DATA MODEL BENEFITTING FROM OTC-INFORMATION.

3.) BACKTEST THE RESULTS

4.) GAIN SIGNIFICANT BENEFITS, BOTH IN TIME AND MONEY

BACKTESTING OF RESULTS

BACKTESTING IS A METHOD OF TESTING HOW RELIABLE THE MARKET PREDICTOR IS, AND HOW WELL IT HAS PERFORMED IN THE PAST. BACKTESTING USES THE ACTUAL MARKET TRADES AS A REFERENCE.



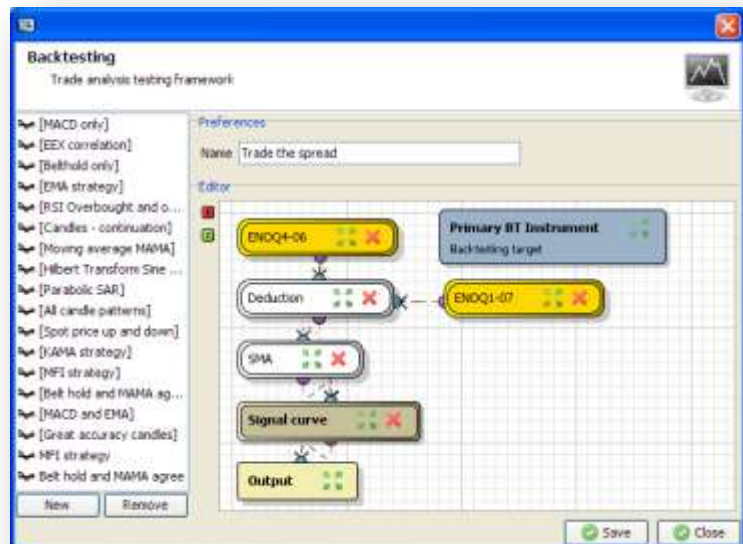
RESEARCH INDICATES SIGNIFICANT BENEFITS

OUR RESEARCH INDICATES THAT SIGNIFICANT BENEFITS ARE AVAILABLE ON THE NORD POOL MARKET FOR THOSE USING COMPUTERIZED TRADE SIGNALING SYSTEMS.

Daily candles from beginning of year 2006	Year 2007	Q1/07	Q4/06
Profit	232%	344%	340%
Successful Trades	81,5%	96%	90%
Number of trades	54	45	49
Max Loss	-2,3%	-1,8%	-2,5%

EASY AND FLEXIBLE

WITH E²'S BACKTESTING TOOLS, YOU CAN PUT YOUR OWN EXPERIENCE TO WORK – DISCOVER UNIQUE OPPORTUNITIES AND BENEFIT FROM THEM. INTUITIVE GRAPHICAL USER INTERFACE, POSSIBILITY TO GENERATE COMBINATION SIGNALS AND INCLUSION OF FUNDAMENTAL DATA TAKE CARE OF THAT.



Requirements for fast and accurate market decision making

ENERGY MARKET NEWS:

READ YOUR NEWS LIKE YOU WOULD READ YOUR E-MAILS

The screenshot displays the 'last_view.ert2 - E2 Energy market analysis platform [2006249]' window. It features a 'News' section with a list of news items and a detailed view of a specific article.

News List (Top):

Title	Time
Naturvernforbundet varsler kamp etter Statsetts nei til biokraftverk	14... Na...
Fynsværket B3 (220 MW): Maintenance prolonged	14... Da...
EuroPower energikalender for i morgen	14... Eu...
Vuosaari B G5 (260 MW): Back in operation 12:54	13... Th...
Vuosaari B G5 (260 MW): Expected back soon	13... Th...
Vattenfall planlegger biokraftverk i Heinola	13... Va...
Polish PX baseload PLN 121.76/MWh (+2.88) Sep 8	13... (E...
ELSPOT: System price down 2.65 to EUR 62.61/MWh Friday	13... Th...
-- Elspot Kontek EUR 48.58/MWh (-6.92) Sep 8 --	13... -
-- Elspot Denmark East EUR 54.40/MWh (-10.14) Sep 8 --	13... -
-- Elspot Denmark West EUR 41.67/MWh (-11.33) Sep 8 --	13... -
-- Elspot Helsinki EUR 63.07/MWh (-3.27) Sep 8 --	13... -
-- Elspot Tromsø EUR 65.27/MWh (-1.76) Sep 8 --	13... -
-- Elspot Oslo EUR 65.27/MWh (-1.30) Sep 8 --	13... -

News(1) Table (Bottom):

Title	Time	Description
EuroPower		
EEX Carbon Index EUR 16.26/EUA (-0.04) September 7	10:42:02	CARBID: Intra day auctions in the EEX Spot market for EU allowances:P
NAET to launch Dealers Directory for the Nordic power	10:02:17	Nordic Association of Electricity traders (NAET) will launch a Dealers
Hydro sells gas to Gazprom in Britain	07:33:20	Hydro yesterday signed an agreement for sale of gas to Gazprom
Hydro inngår gassavtale med Gazprom Marketing &	07:31:14	Hydro signerte i går en avtale om å selge gass til Gazprom Marketing &
Financial markets: Stocks, commodities, currencies	07:29:05	Financial markets: Stock indices, commodities, interest rates and
European stock markets: Close lower	07:12:57	European stock markets close UK SHARES CLOSE LOWER Wednesday,
Nord Pool total power market turnover 7,584 GWh Sep 6	07:06:20	Nord Pool Total Market Turnover (GWh) Date Nord Pool Bilateral Billa
Petroleum/coal prices London and New York markets	07:02:56	Prices on futures contracts in crude oil, natural gas, heating oil and coa
Point Carbon News		
Midday market update	15:40:08	The price of carbon initially firmed this morning, but eased off to trade
Midday market update	15:40:08	A slightly weaker energy complex failed to impact on the price of

Article Preview (Right):

EuroPower MARKET: The wet end weighed market down

06.09.2006 Mo 16:34

The power market continues moving up and down erratically. On Wednesday the market ended down again and was weighed down by a falling spot price and extremely wet weather right at the end of the forecast period.

"The market is very volatile," power trader Jacob Hornnes at Sognekraft said and explained that this was due to Thursday's spot price being slightly lower than expected and that the latest forecast from GFS (Global Forecast System) was a lot wetter than it has been previously.

The 16 day forecast from GFS shows 5 TWh above normal, but this is very uncertain since most of the precipitation is expected to fall during

NEWS ARE IMPORTANT PART OF MARKET INTELLIGENCE

MARKET MONITORING IS NOT ONLY ABOUT LOOKING AT NUMBERS, READING NEWS IS AN INTEGRAL PART OF EVERY PROFESSIONAL'S WORKDAY. WE WANTED TO MAKE READING NEWS AS EASY AS POSSIBLE WITH OUR BRAND NEW NEWS READING TOOL THAT WORKS LIKE YOUR E-MAIL READER. YOU CAN EVEN ADD YOUR FAVORITE RSS -NEWS FOR FREE FROM SUCH PLAYERS AS BBC, CNN AND POINT CARBON!

SOME OF E²'S KEY NEWS FUNCTIONALITY:

- POWERFUL SEARCH AND RELATED NEWS FEATURES.
- RECEIVE ALERTS WHEN NEW NEWS ITEM IS BEEN RECEIVED.
- USE EUROPOWER'S POWER MARKET NEWS TO POLL WHAT OTHER TRADER'S ARE THINKING.
- ADD YOUR FAVORITE RSS NEWS FEED TO SAME SCREENS.

Requirements for fast and accurate market decision making

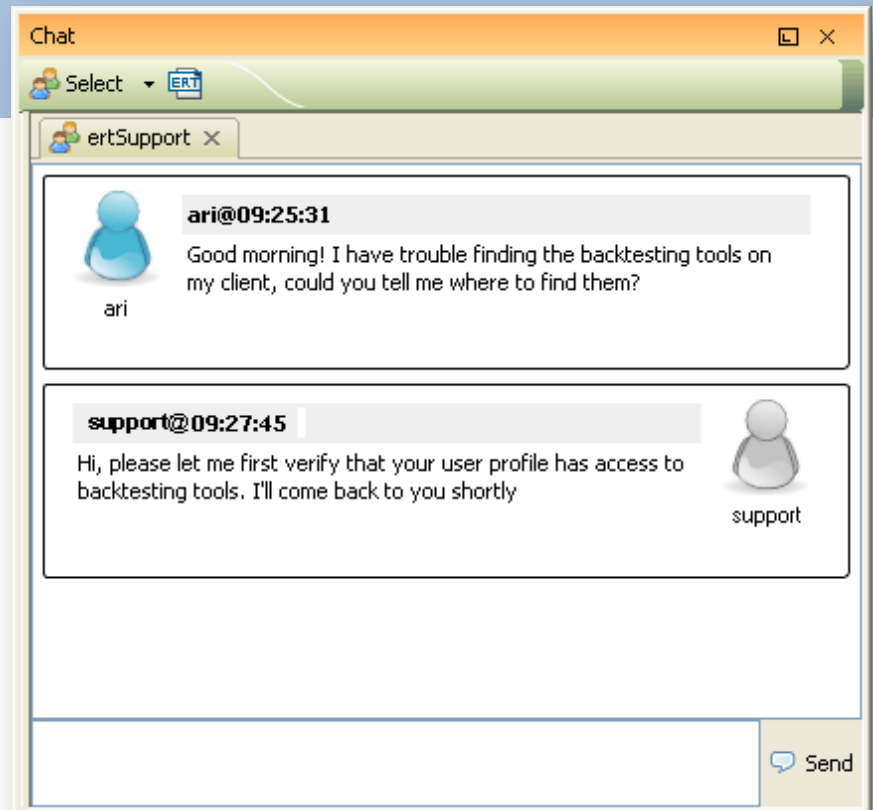
TEAM TOOLS:

SHARE DATA, MARKET SCREENS AND CHAT

CHAT WITH YOUR COLLEAGUES AND CUSTOMERS

CHAT IS A CONVENIENT WAY TO SHARE VIEWS ON MARKET WITH BOTH YOUR CUSTOMERS AND COLLEAGUES. CUSTOMERS WILL VIEW THIS AS A SIGN OF EXCELLENT SERVICE LEVEL. FOR GEOGRAPHICALLY EXPANDED TEAM, THIS TOOL PROVIDES A NEW DIMENSION TO MARKET ANALYSIS.

ALL USERS HAVE ACCESS TO FREE USER SUPPORT THROUGH INTSTREAM'S SUPPORT CHAT CHANNEL.



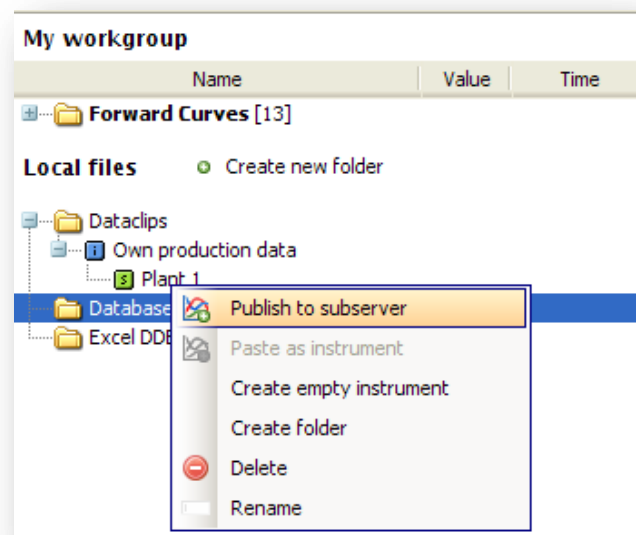
SHARE YOUR MARKET SCREENS THROUGH CHAT

VERY POWERFUL FEATURE IN E² IS THE POSSIBILITY TO INSTANTLY SHARE THE CURRENT MARKET VIEW, ON YOUR SCREEN RIGHT NOW, TO YOUR COLLEAGUES THROUGH THE CHAT SYSTEM.



SHARE AND PUBLISH TIME SERIES DATA

WITH E²'S LOCAL SERVER, THE SYSTEM BECOMES A CENTRALIZED TIME SERIES DATABASE FOR THE WHOLE TEAM TO USE! IF ONE WANTS TO SHARE HER PERSONAL DATA FILES WITH FELLOW TEAM MEMBERS, THIS CAN BE EASILY DONE BY JUST PUBLISHING THE DATA.



Good Decisions Require Right Data *Managed Right*

DATA MANAGEMENT TO THE POWER OF TWO

E² DATA MANAGEMENT SOLUTION IS DESIGNED FROM GROUND UP TO SERVE SPECIFIC REQUIREMENTS OF NORD POOL MARKET PARTICIPANTS. MAIN FUNCTIONALITY:

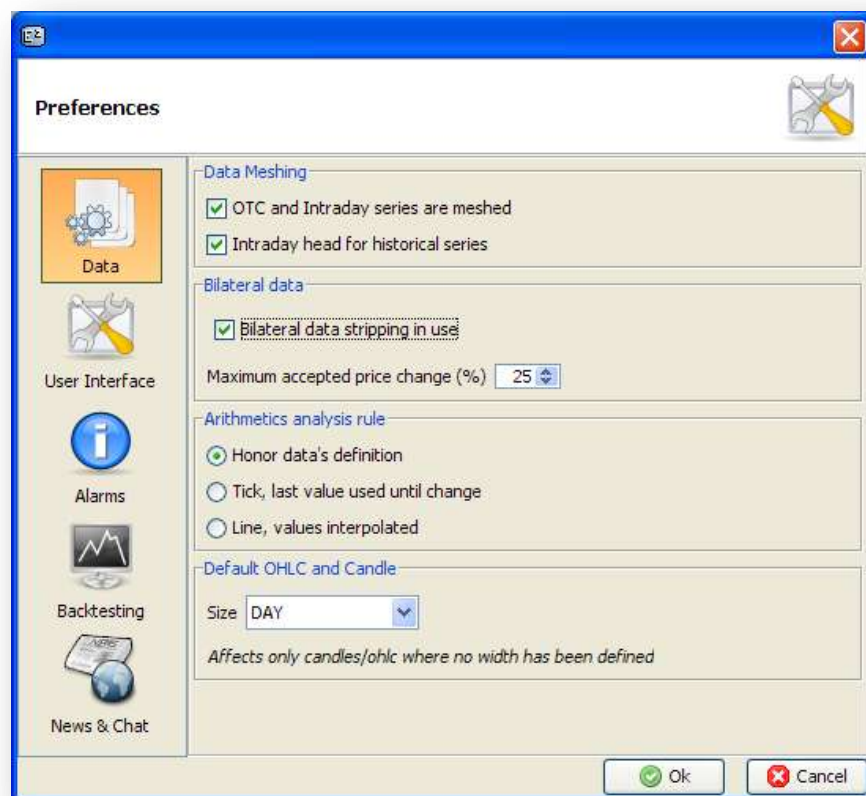
■ REAL TIME FEEDS AND HISTORICAL DATABASE PUT TOGETHER

E² IS ACTUALLY A COMBINATION OF TWO SYSTEMS THAT ARE TYPICALLY SEEN AS SEPARATE – FIRST ONE BEING REAL TIME MARKET MONITORING SYSTEM AND ANOTHER, A LARGE DATA SET ANALYSIS ENVIRONMENT. WHAT DOES THIS MAKE OF E² THEN? WELL, WE THINK IT AS A REAL TIME ANALYSIS ENVIRONMENT WITH POWERFUL MONITORING TOOLS AND CALL IT ENERGY MARKET ANALYSIS PLATFORM!

■ USE OTC AND EXCHANGE DATA AS ONE

ABILITY TO OPTIONALLY MESH BOTH THE OTC DATA WITH THE EXCHANGE DATA FOR ALL TOOLS TO USE GIVES YOU SIGNIFICANT BENEFITS:

- SEE THE PRE-MARKET OTC TRADES TO FIND OUT WHERE THE MARKET IS HEADING BEFORE THE EXCHANGE IS OPENED.
- BENEFIT FROM MORE ACCURATE ANALYSIS RESULTS WHEN USING THE COMPLETE DATA SET.



■ UPDATE CLOSING PRICE DATA WITH THE LATEST REAL TIME QUOTES

IN E², ALL CLOSING PRICE CHARTS CAN ALWAYS BE IN REAL TIME. ABILITY TO ADD THE LATEST REAL TIME DEAL VALUE IN THE END OF CLOSING PRICE CHARTS PROVIDES AN OPTIMAL DATA SET FOR SIMULTANEOUS ANALYSIS AND MONITORING WORK.

■ AUTOMATED CLEANING OF OTC DATA

BILATERAL DATA, SUCH AS THE OTC INFORMATION FROM NORD POOL, OCCASIONALLY HAS ERRORS. E²'S AUTOMATED CLEANING OF OTC DATA SOLVES THIS PROBLEM WITH USER ADJUSTABLE THRESHOLD.

When there is an abundance of data and the data is changing quickly. How to keep up?

■ ADJUSTABLE INTERPOLATION RULES

IN MOST REAL LIFE ANALYSIS CASES, DATA TO BE USED, REQUIRES PREPARATION. THIS IS ESPECIALLY THE CASE, WHEN USING MULTIPLE DATA SETS AS INPUTS. E² IS POWERED WITH A SOPHISTICATED INTERPOLATION ENGINE, THAT CAN AUTOMATICALLY DETECT WHICH RULE WOULD FIT THE BEST. USER CAN ALSO ENFORCE THE CHOICE TO HER LIKING. MAIN RULES ARE:

- FILL THE EMPTY VALUES IN A DATA SET WITH THE LAST KNOWN GOOD VALUE.
- FILL THE EMPTY VALUES IN A DATA SET WITH THE INTERPOLATED VALUE, IE. SET THE VALUE TO FIT IN BETWEEN THE GOOD VALUES ON BOTH ENDS OF THE EMPTY VALUE.

■ DATA ACCURACY RULES AUTOMATICALLY ADJUSTING TO DATA TYPE

IT IS VERY EASY TO CHANGE THE DATA ACCURACY IN E², JUST ACTIVATE THE SERIES AND CHOOSE THE ACCURACY YOU WOULD LIKE TO SEE THE DATA IN.

E2 ALSO HELPS YOU IN DOING THIS BY CHOOSING THE RIGHT CALCULATION RULE FOR THE TYPE OF INFORMATION. EXAMPLES OF DATA TYPE BASED ACCURACY SETTINGS:

- WEEKLY *SPOT* DATA IS SHOWN AS THE MATHEMATICAL AVERAGE OF THE HOURLY SPOT PRICES.
- HOURLY *VOLUME* DATA IS SHOWN AS THE *SUM* OF ALL THE VOLUME TRADED DURING EACH HOUR.
- 30 MINUTES *PRICE* DATA IS SHOWN AS THE CLOSING PRICE, LAST TRADE EXECUTED DURING EACH 30 MINUTE SEQUENCE.

■ ACTIVE VS. EXPIRED PRODUCTS

E² AUTOMATICALLY SEPARATES ACTIVE PRODUCTS FROM THOSE ALREADY EXPIRED WHEN BROWSING THROUGH RESOURCE MANAGER. EXPIRED PRODUCTS ARE STILL AVAILABLE FOR ANALYSIS, WHEN NEEDED.

■ VIRTUAL INSTRUMENTS

A VERY POWERFUL FEATURE, VIRTUAL INSTRUMENT KEEPS YOUR MARKET SCREENS UP-TO-DATE, WHEN THE FINANCIAL PRODUCT EXPIRES ON THE MARKET.

WHEN THE TRADING HAS SEIZED ON ONE PRODUCT DUE TO BEGINNING OF ITS DELIVERY PERIOD, VIRTUAL INSTRUMENT FINDS THE PRODUCT REPLACING IT AND CHANGES ALL THE CHARTS AND ANALYSIS CONTENT TO NEW PRODUCT.

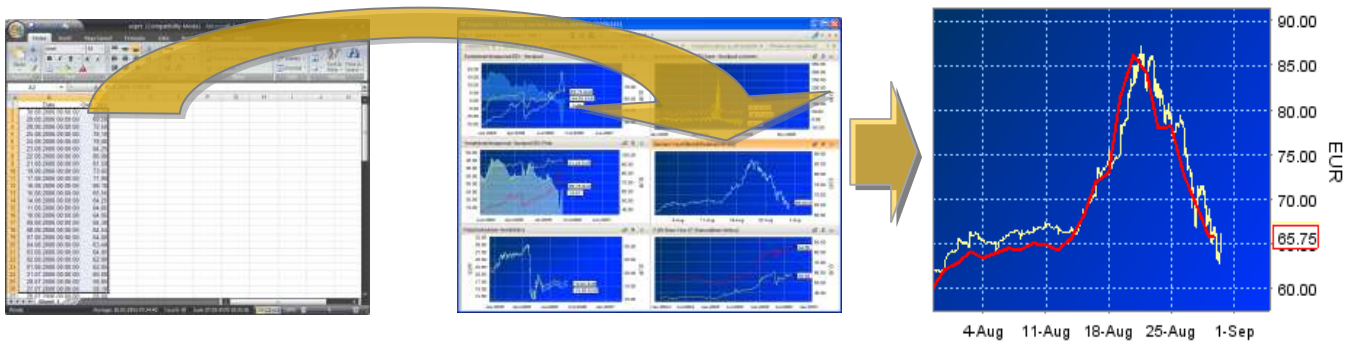
■ SYNTHETIC DERIVATIVES

E2 PROVIDES INFORMATION ON PRICE DEVELOPMENT OF ALL FINANCE MARKETS ALSO IN THE FORM OF SYNTHETIC DERIVATIVES.

SYNTHETIC DERIVATIVES ARE COMPOSITES MADE OF TIME PERIODS OF EACH PRODUCT'S PRICE DEVELOPMENT RELATIVE TO THEIR ORDER OF MATURITY.

Data Handling: Importing and Exporting

Example on How E2 makes working faster and easier – instant data importing:
Drop your chosen data from MS Excel to E² chart and it will be both shown and stored in that chart together with the market data.



Expand the calculation possibilities, make reports, presentations and integrate with 3rd party systems

■ LIVE QUOTES AND TIME SERIES TO MS EXCEL

IT IS VERY EASY TO FIND THINGS TO DO WITH AUTOMATICALLY UPDATING MARKET DATA ON YOUR MS EXCEL SHEETS.

E²'s DDE LIVE LINKAGE SYSTEM DOES NOT ONLY GIVE YOU POSSIBILITY TO EXPORT LIVE QUOTES, BUT ALSO THE WHOLE TIME SERIES.

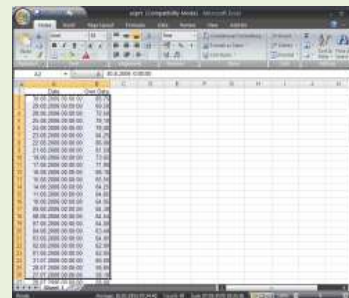
■ CHARTS TO ALL OTHER PROGRAMS

CHARTS CAN BE EXPORTED AS PICTURES TO OTHER PROGRAMS, SUCH AS MS WORD AND POWERPOINT.

■ EXPORT MULTIPLE SERIES TO MS EXCEL FILES

LARGE PORTION OF DATA IS EASIEST TO EXPORT STRAIGHT AS MS EXCEL FILES.

Data exporting from E² client



■ SERVER AND DATABASE SOLUTIONS

FOR LARGER INTEGRATION OR DATA PUBLISHING PURPOSES, INTSTREAM OFFERS A TOOL FOR WRITING REAL TIME MARKET FEED TO CLIENT'S SQL DATABASE. FOR LARGE SCALE DATA STORAGE NEEDS, LOCAL SERVER IS RECOMMENDED.

Different Design Philosophies work equally well when optimizing your screens

CUSTOMIZING YOUR OWN SET OF SCREENS

WITH E2 UNFOLDS ITS TRUE POWER.

REMEMBER THAT YOU ARE NOT LIMITED TO ONLY ONE SET OF SCREENS, IN FACT, YOU CAN STORE UNLIMITED NUMBER OF THESE! ONE CAN GO ON WITH A NUMBER OF DESIGN PHILOSOPHIES:

- 1.) PLACING A NUMBER OF DIFFERENT PRODUCTS IN ONE SCREEN ENABLES BETTER COMPARISON BETWEEN MARKET STATES AFFECTING THESE PRODUCTS.
- 2.) PLACING A NUMBER OF PRODUCTS IN ONE CHART IS ANOTHER GREAT WAY TO INCREASE YOUR ABILITY TO COMPARE DATA.
- 3.) BUILDING A NUMBER OF SIMILAR SCREENS TO DIFFERENT TABS, BUT HAVING EACH TAB CONTAIN DIFFERENT PRODUCT, LETS YOU QUICKLY COMPARE NUMBER OF PRODUCTS WHILE HAVING MAXIMUM SCREEN SPACE FOR EACH PRODUCT.
- 4.) BUILDING ONE LARGE VIEW HAVING EACH TABBED SCREEN CONTAIN DETAILED CALCULATION MADE OF ONE MARKET PRODUCT ENABLES VIEWING ALL ASPECTS OF THE SITUATION.

Data Feeds:

Nordic Area

MAKING THE RIGHT DECISIONS REQUIRE RIGHT DATA – RIGHT MARKET PRICE DATA TOGETHER WITH THE DATA DRIVING THE MARKET PRICES.

ABILITY TO MANAGE DIFFERENT TYPES OF DATA REQUIRED TO SEE THE COMPLETE MARKET PICTURE IS ONE OF E²'S BIGGEST ADVANTAGE.



MARKETS	Info	OTHER	Info
Nord Pool	Power, CO2 Allowance - Financial Spot, CfD and options markets	Weather Forecasts:	Precipitation, temperature, wind, air pressure from Denmark, Finland, Germany, Norway, Sweden
EEX	Power, CO2 Allowances - Financial and Spot markets	Water Reservoir	Finland, Norway, Sweden
ICE, ECX	Oil, Natural Gas, Power, CO2 Allowances – Financial market	Production and Consumption	Denmark, Finland, Norway, Sweden
ETS	CO2 Allowances – Bilaterals market	Transmission	All cables in and out of Nordic area
ZEEBRUGGE	Natural Gas - Financial market	Exchange and capacity forecasts	
NBP	Natural Gas - Financial market	Regulating Power	Nord Pool
TTF	Natural Gas - Financial market	Consumer electricity prices	Finland, Norway
API2 and API4	Coal		
Implied Freight	Coal		
Belgium	Power – Bilateral Market		
France	Power – Bilateral Market		
UK	Power – Bilateral Market		
Holland	Power – Bilateral Market		
Nymex	Brent crude oil and coal		
Forex currency exch	Currency forwards and spot price on chosen currencies		
Spectron Indeces	Power and Gas		
Statkraft Financial	Bilateral Power		
Energy			
		NEWS	Info
		Europower News	Nordic area specific power market news
		Nord Pool UMM	Urgent Market Messages
		RSS	Your chosen set of news feeds

Notice – Feed content presented on this page is subject to change without prior notice.

Chosen Functionality

INTSTREAM E² ENERGY MARKET ANALYSIS PLATFORM IS A SOFTWARE PRODUCT OFFERED WITH CUSTOMIZED SET OF FUNCTIONALITY AND DATA CONTENT.

THE SOFTWARE IS DESIGNED SPECIFICALLY TO MANAGE AND AID IN MARKET DECISION MAKING IN FINANCIAL ENERGY MARKETS. THE SYSTEM HAS BEEN DEVELOPED WITH SPECIAL FOCUS ON MEETING THE NORDIC MARKET REQUIREMENTS, BUT IS NOT LIMITED TO THIS.

CLIENT GENERAL FUNCTIONALITY

Fully customized workspace with file save and load
Multi-tabbed screens
Manages and shows both real time and historical data
Ability to Import and export data
Works through Internet connection and locally
Ability to analyse and prepare data
Ability to present and store news content
Support for RSS news feed
DDE live linkage
Chat functionality with file sharing
Data Publishing to other users
Local data cache for fast data retrieval

CLIENT SPECIFIC FUNCTIONALITY

Ability to show quote, order book, detailed trades and graphical information
Ability to generate trading strategies (backtesting)
Ability to manage market screens through graphical editor
Ability to measure trade success and best price levels
Ability to calculate statistics on time series on analysis matrix
Ability to alter data accuracy
Chart grouping
Data adjusted interpolation
OTC and exchange data meshing
OTC data cleaning
Search functionality on time series and news content
Synthetic derivatives model
Virtual instrument model
Ability to calculate what-if scenarios

SERVER AND DATABASE INTEGRATION

Ability to write market feed content to client SQL databases
Ability to chain servers for local data storage purposes

ANALYSIS FUNCTIONALITY

Min / Max Trades	Min / Max Trades Min / Max Trades with Volume
Filters	Filter Values Hour Filter Interpolation
Fixed Variable	Addition Multiplication
Arithmetic	Addition Deduction Multiplication Division
Sums and Averages	Daily Sum Weekly Sum Monthly Sum 10 Day Sum Daily Average Weekly Average Monthly Average 10 Day Average
Statistical	Sum of Many Average Correlation Standard deviation Forecast Volatility Linear Regression Linear Regression Angle Linear Regression Intercept Linear Regression Slope
Comparison Functions	Normalization % Change Change from Date Diff. in %
Time Shift	Hour Shift Day Shift Year Shift
Forward Curves	Nord Pool Forward Curve Nord Pool Forward Curve (EOD) Monthly Forward Curve Monthly FC with Confidence Intervals EEX Peak Forward Curve EEX Base Forward Curve
Moving Averages	Simple Moving Average Exponential Moving Average Double Exponential MA Weighted Moving Average Triangular Moving Average

Notice – Functionality content presented on this page is subject to change without prior notice.

ANALYSIS FUNCTIONALITY	
Moving Averages continue	T3 Triple Exponential MA
Adaptive Moving Averages	Kaufman's Adaptive MA Mesa Adaptive MA
Trend Detection	MACD Deviation Percentage Price Oscillator AROON AROON Oscillator Commodity Channel Index (CCI) Negative Volume Index (NVI) Parabolic SAR ADX Balance of Power Bollinger Bands Envelopes Average True Range (ATR) Directional Movement Index Minus Directional Indicator Minus Directional Movement Plus Directional Indicator Plus Directional Movement
Momentum Indicators	Accumulation / Distribution Money Flow Index (MFI) On Balance Volume (OBV) Chaikin A/D Oscillator Rate-of-Change (ROC) Rate-of-Change Percentage Rate-of-Change Ratio Rate-of-Change Ratio 100 Momentum Relative Strength Index (RSI) Williams %R Chande Momentum Oscillator Stochastic Slow Stochastic Fast Stochastic RSI TRIX
Price Types	Typical Price Average Price Median Price Weighted Closing Price
Cycles	Dominant Cycle Period Dominant Cycle Phase Phasor Components Sine Wave Instantaneous Trend Line Trend vs Cycle Mode

ANALYSIS FUNCTIONALITY	
REVERSAL PATTERNS DETECTED	CONTINUATION PATTERNS DETECTED
Two Crows	Three-Line Strike
Three Black Crows	Closing Marubozu
Three Inside Up/Down	Up/Down Gap White Lines
Three Outside Up/Down	In-Neck Pattern
Three Stars in the South	Kicking Bull / Bear
Three Advancing White Soldiers	Long Line Candle
Advance Block	Marubozu
Belt-hold	On-Neck Pattern
Breakaway	Falling / Rising Three Methods
Concealing Baby Swallow	Separating Lines
Counterattack	Short Line Candle
Doji Star	Takuri
Dragonfly Doji	Tasuki Gap
Engulfing Pattern	Thrusting Pattern
Gravestone Doji	Upside / Downside Three Methods
Hammer	Mathold
Hanging Man	
Harami	INDECISION PATTERNS DETECTED
Harami Cross	Doji
High-Wave	Long Legged Doji
Hikkake	Rickshaw Man
Modified Hikkake	Spinning Top
Homing Pigeon	Stalled Pattern
Identical Three Crows	
Inverted Hammer	
Kicking	
Ladder Bottom	
Matching Low	
Piercing Line	
Shooting Star	
Stick Sandwich	
Tristar Pattern	
Unique 3 River	
Upside Gap Two Crows	
Morning Doji Star	
Morning Star	
Evening Doji Star	
Evening Star	
Dark Cloud Cover	
Abandoned Baby	

Versions

Different functionality set for different tasks

WE RECOGNIZE THE DIFFERENT REQUIREMENTS WITHIN AN ORGANIZATION FOR POWER MARKET INFORMATION AND THUS WE PROVIDE DIFFERENT VERSIONS OF OUR SOFTWARE FOR DIFFERENT TYPES OF USERS.

EVEN MORE PERSONALIZED CUSTOMIZATION IS POSSIBLE – INDIVIDUAL COMBINATIONS CAN BE TAILORED TO SPECIFIC NEEDS.

IN ADDITION TO VERSIONS PRESENTED HERE, WE HAVE TWO ADDITIONAL VERSIONS, ONE FOR ONLY *TECHNICAL ANALYSIS* PURPOSES AND ANOTHER VERSION ONLY TAILORED FOR FUNDAMENTAL ANALYSIS REQUIREMENTS.

Version	E2 Monitor	E2 Viewer	E2 Business	E2 Professional
Ready-made screens	3 screens	✓	✓	✓
Automatically updating market feed	✓	✓	✓	✓
Basic charting functions	✓	✓	✓	✓
Bid/Ask Depth Information	✓	✓	✓	✓
UMM market messages	✓	✓	✓	✓
Possibility to add market data feeds and screens		✓	✓	✓
Ability to edit screens		✓	✓	✓
Advanced charting functions		✓	✓	✓
Ability to load screen files		✓	✓	✓
Access to all data in screens		✓	✓	✓
Export data as files and charts		✓	✓	✓
Alarm Manager		✓	✓	✓
Chat and file sharing		✓	✓	✓
Edit analysis parameters			✓	✓
Free access to time series database			✓	✓
Ability to save screen files			✓	✓
Extensive analysis package			✓	✓
Own data Import and storage			✓	✓
Intraday Analysis			✓	✓
Compatible with sub-server and replicator			✓	✓
Hilbert transform and adaptive ma's		●	●	✓
DDE live update to MS Excel		●	●	✓
Portfolio benchmarking			●	✓
Backtesting		●	●	✓
Candle pattern detection		●	●	✓
Graphical Analysis Editor			●	✓
Virtual Instruments			●	✓

● Optional

CONTACT US AT:

Intstream Oy
Tekniikantie 12 02150 Espoo Finland
Phone: +358-9-2517 3518
Fax: +358-9-2517 3519
www.intstream.com
info@intstream.com

FROM SWEDEN:

Intstream Oy - Stockholms kontor
Gsm: 0768648110
kaarle.salonen@intstream.com
www.intstream.se